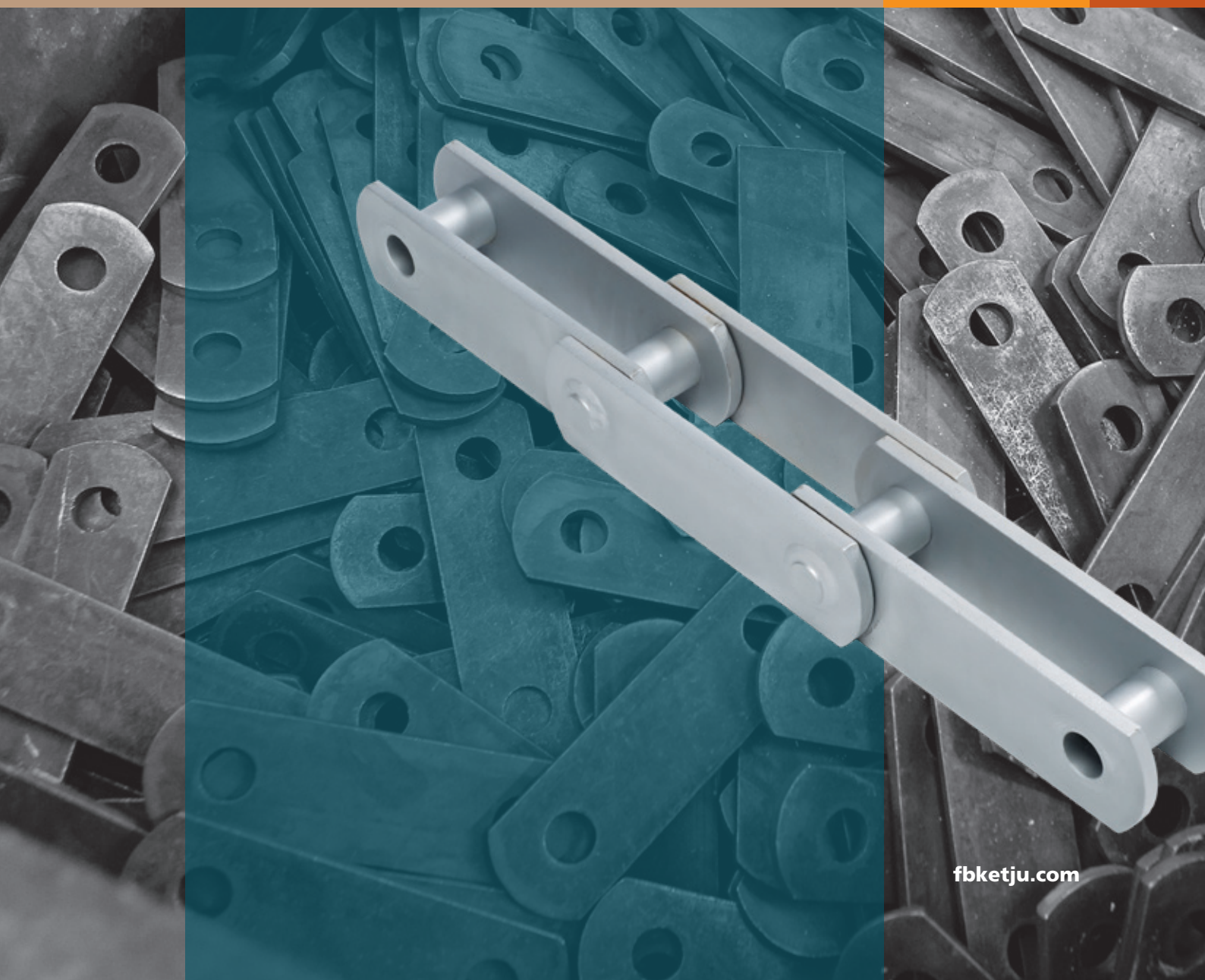


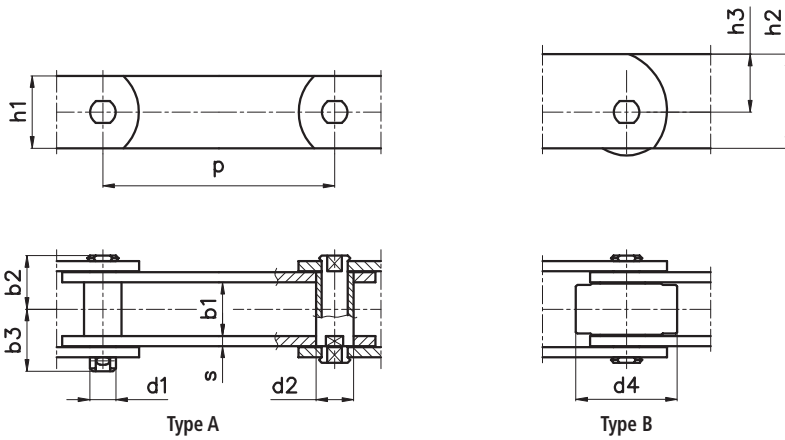


CONVEYOR CHAINS

DIN 1698 / A Series



CONVEYOR CHAINS | DIN 1698 / A Series



SMS 1698	Pitch				Inner width	Pin	Bush	Roller Type B	Sideplates								Breaking Load	Allowed Load
	P								Inner				Outer					
	mm	mm	mm	mm					mm	mm	mm	mm	mm	mm	mm	mm		
														Normal	Heavy			
3,5	50	63	80	100	18	10	15	32	22	26	25	35	22,5	4	4	6	35	5,8
5,5	50	63	80	100	22	12	18	40	25	27	30	40	25	5	4	6	55	9,2
8,5	63	80	100	150	25	14	20	50	30	35	35	50	32,5	6	5	8	85	14,1
12,5	-	100	150	200	35	18	26	60	38	42	40	60	40	8	6	8	125	20,8
18	100	150	200	250	45	20	30	70	46	50	50	78	45	8	6	10	180	30
24	100	150	200	250	55	26	36	80	55	60	60	80	50	10	8	12	240	40
30	-	150	200	250	65	30	42	90	61	66	70	90	55	10	8	12	300	50
40	-	150	200	250	80	36	50	110	71	76	80	110	70	12	10	12	400	66,6
65	-	150	200	250	80	36	50	110	77	83	90	120	75	15	12	15	650	108,3

- Riveted chain
- Riveted or welded chain
- Welded chain

Breaking load is 30 to 50% higher in welded construction.

UPON REQUEST

- welded pins and bushes
- sunked pin ends
- tumbled side plates (specially for plastic sliding tracks)
- bigger clearances
- higher breaking load
- zinc or stainless steel version
- sprockets and wheels



CONVEYOR CHAINS | DIN 1698 / A Series | WEIGHT TABLE

CHAIN SMS 1698	Pitch	Heavy
	P	G
		kg/m
A5,5	63	4,4
	80	4,1
	100	3,8
A8,5	80	6,4
	100	5,8
	150	5,2
A12,5	100	8,9
	150	7,5
A18	100	13,4
	150	11,2
A24	150	17,8
	200	16
A30	150	23,1
	200	20,3
A40	150	32
	200	27,4

